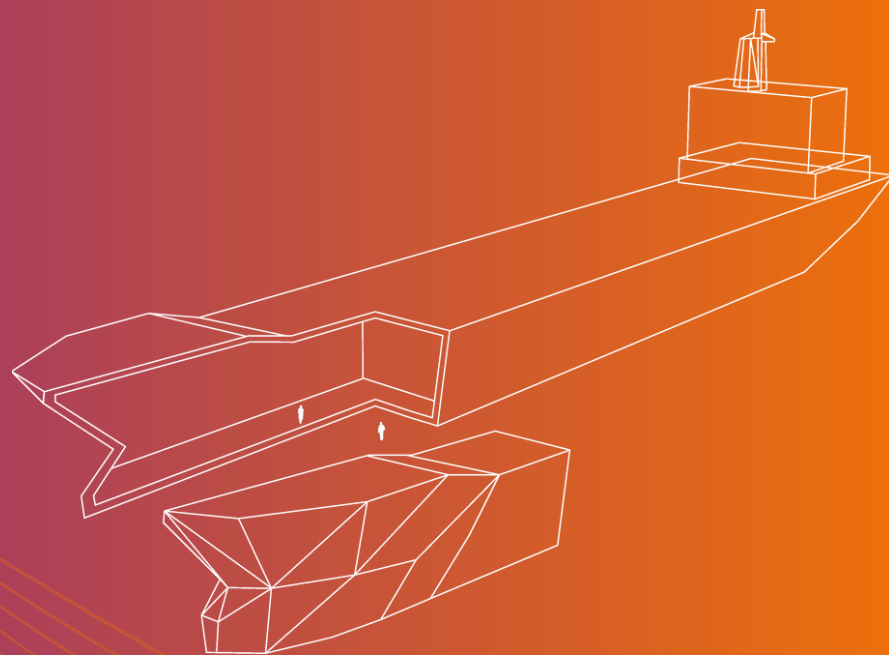


SHIP RECYCLING LAB

TRANSFORMATION THROUGH INNOVATION

LISBON,
9 - 10 OCTOBER 2024



How to reach the venue?

The Factory is part of the Creative Hub Beato (HBC), 2.5km from Santa Apolónia station. The conference entrance is located at Av. Infante Dom Henrique 143 S01, 1950-406 Lisboa.

BUS 759

Should you opt for public transport, we recommend to take bus number 759 (direction Estação Oriente - Interface) and stop at Xabregas. Bus 759 can be caught in main downtown areas, such as Rossio, Praça do Comércio and Santa Apolónia station.

RIDE-HAILING SERVICE PROVIDERS AND TAXIS

SHUTTLE BUS - MARTIM MONIZ › FACTORY

We offer a one-way shuttle bus service from Martim Moniz square to the Factory on both mornings (9 October and 10 October). Please make sure to register your interest once you purchase the ticket via Eventbrite. More information concerning exact time and pick-up location will be shared with attendees at a later stage via e-mail.

Accommodation

There are several accommodation options in Lisbon. We recommend to find a room/apartment near Rossio, Martim Moniz, Praça do Comércio or Santa Apolónia station. Given the fact that the city has turned into a popular travel destination, it is advised to book your stay well in advance.

MY STORY HOTEL TEJO

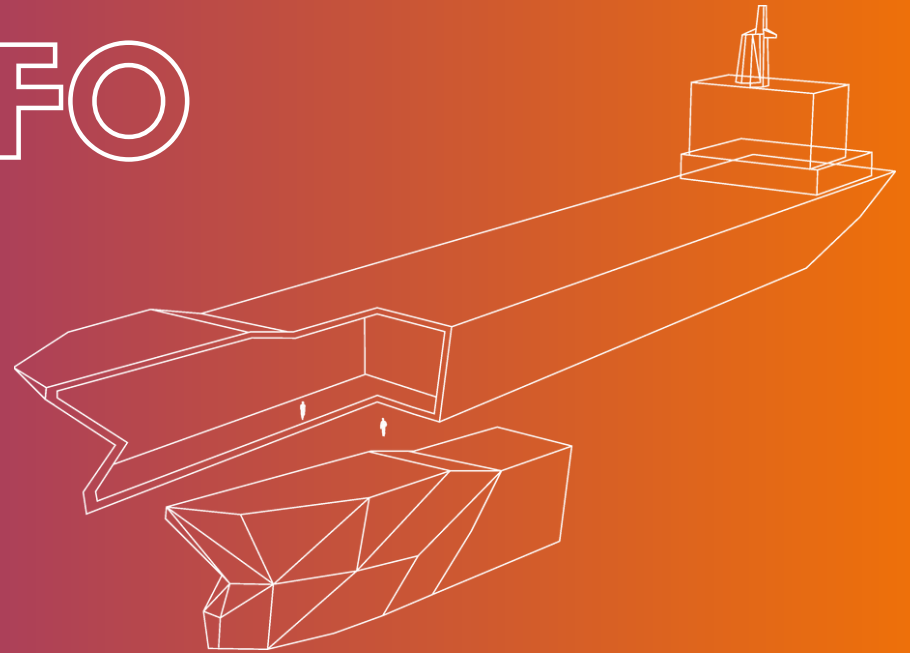
If you are interested in booking a room at this hotel, please reach out to get a 10% discount code. The availability of rooms is limited.

OTHER POPULAR HOTELS

Hotel Mundial, The Editory Riverside Santa Apolónia Hotel, Tandem Palacio Alfama, Rossio Boutique Hotel.

CONTACT US FOR MORE INFO

NGO Shipbreaking Platform
Rue de la Liniere 11, 1060 Brussels (Belgium)
Tel: +32 (0) 260 94 418
events@shipbreakingplatform.org



SHIP RECYCLING LAB