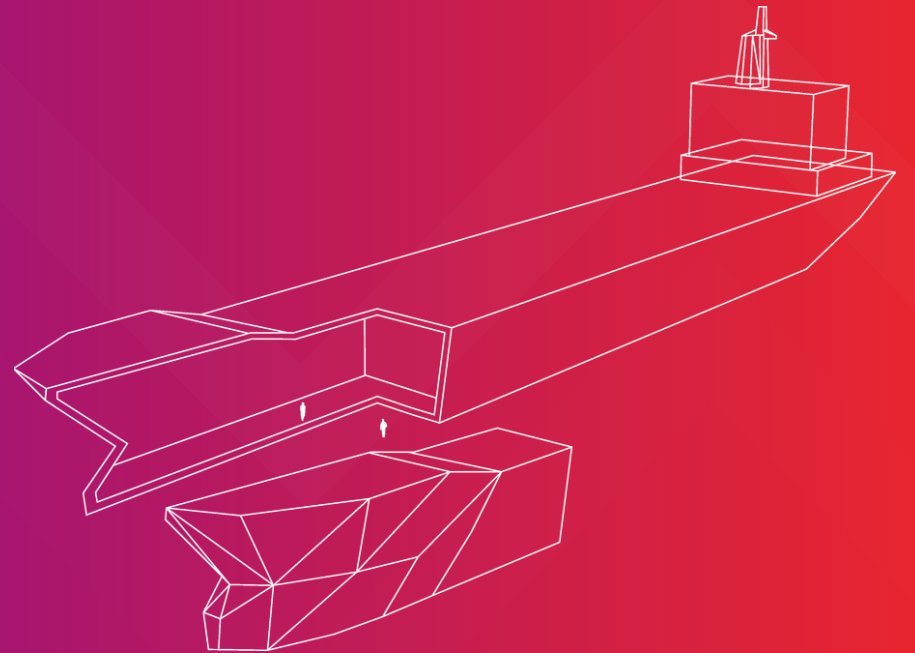


# SPONSORSHIP PACKS

*SHIP RECYCLING LAB*



# WHY SPONSOR THE LAB?

**The Ship Recycling Lab is a forward-thinking event showcasing best practices for ship demolition and design, waste management, and material recovery.**

Bringing together progressive stakeholders for insightful and inspiring presentations, panel debates, and networking sessions, the Ship Recycling Lab aims to boost engagement and commitment to finance capacity building and innovation.

By becoming a sponsor you can gain valuable exposure for your brand and build premium connections with innovators from around the world.

100+

High-level Attendees

40+

Speakers

# THE FORMAT

This interactive and progressive event will take place over two days. It will include keynotes, presentations, interactive panel discussions, slam sessions, and a networking dinner.

# WHEN & WHERE

14 - 15 OCTOBER 2026

LA FRICHE, MARSEILLE, FRANCE



# MAIN SPONSORSHIP PACKS

Main packages are meant to provide you not only with brand visibility but also with extra benefits, such as discounts on tickets and covered transport and accommodation for the selected participants.

		<b>DIAMOND</b> <b>40.000€</b> 1/1 AVAILABLE	<b>PLATINUM</b> <b>30.000€</b> 1/1 AVAILABLE	<b>GOLD</b> <b>20.000€</b> 2/2 AVAILABLE	<b>SILVER</b> <b>15.000€</b> 3/3 AVAILABLE	<b>BRONZE</b> <b>10.000€</b> 5/5 AVAILABLE	<b>COPPER</b> <b>3.000€</b> 5/5 AVAILABLE
<b>Free Tickets</b>		5	4	3	2	2	1
<b>Discount on 2 Extra Tickets</b>		35%	30%	25%	20%	15%	10%
<b>Visibility</b>		Premium	Premium	Premium	Premium	Premium	Regular
<b>Extra</b>		Logo on lanyard	Dinner Sponsor	Lunch Sponsor	Coffee Break Sponsor	×	×
<b>Company Booth</b>		✓	✓	×	×	×	×

REGULAR BRAND VISIBILITY means that your logo will be featured in the event website under the Sponsors - Supporters section.

PREMIUM BRAND VISIBILITY means that your logo and/or your company name will be featured in various online materials leading up to the conference, during the conference, and after the conference (i.e. event website, social media, newsletters). Moreover, your logo will be placed on physical banners at key locations on conference grounds and presentation slides.

# 'A LA CARTE' SUPPORT PACKS

You have the opportunity to sponsor the conference with a contribution under 3.000€.

All options can be discussed and negotiated with the organisers. If you will opt for an 'A la carte' pack, you will be recognised as a "supporter" on the conference's website.

# OUR TRACK-RECORD

**Ship Recycling Lab 2022 - Rotterdam**  
**Ship Recycling Lab 2024 - Lisbon**

## **Sponsors**

Leviathan, Sea2Cradle, Elegant Exit Company, AF Decom, EMR

## **Selected speakers**

European Commission, A.P. Møller Mærsk, ArcelorMittal, OECD, Damen Shipyards Group, DNB Bank, IFC, Carnival Corporation, Worldsteel, Petrobras, IOGP, Hapag-Lloyd, JRC

200+

High-level Attendees

80+

Speakers



# CONTACT US FOR MORE INFO

NGO Shipbreaking Platform

Rue de la Liniere 11, 1060 Brussels (Belgium)

Tel: +32 (0) 260 94 418

[nicola@shipbreakingplatform.org](mailto:nicola@shipbreakingplatform.org)

[events@shipbreakingplatform.org](mailto:events@shipbreakingplatform.org)

[www.shiprecyclinglab.org](http://www.shiprecyclinglab.org)

***SHIP RECYCLING LAB***

