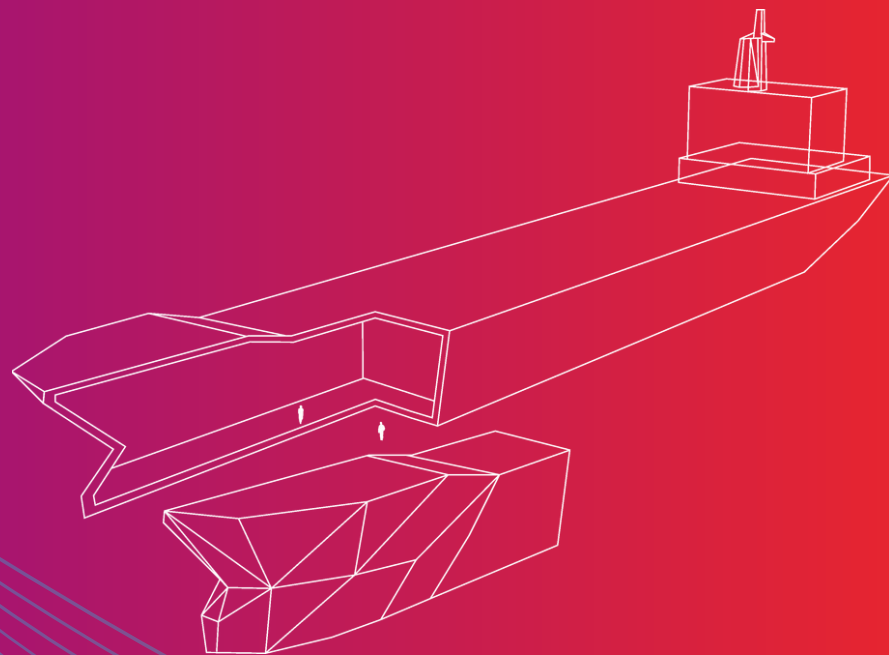


SHIP RECYCLING LAB

TRANSFORMATION
THROUGH
INNOVATION

MARSEILLE,
14 - 15 OCTOBER 2026



How to reach the venue?

BUS 49 or 56

Should you opt for public transport, we recommend to take bus number 49 (Réformés Canebière Vauban) or bus 56. (Belle de Mai La Friche Gare Saint Charles). Service 7/7 (6h40 to 19h10).

Night bus n°582

To get back to the town centre (leaving from Canebière Bourse every hour from 8.15 pm onwards. Last bus leaves at 0:45).

METRO & TRAM

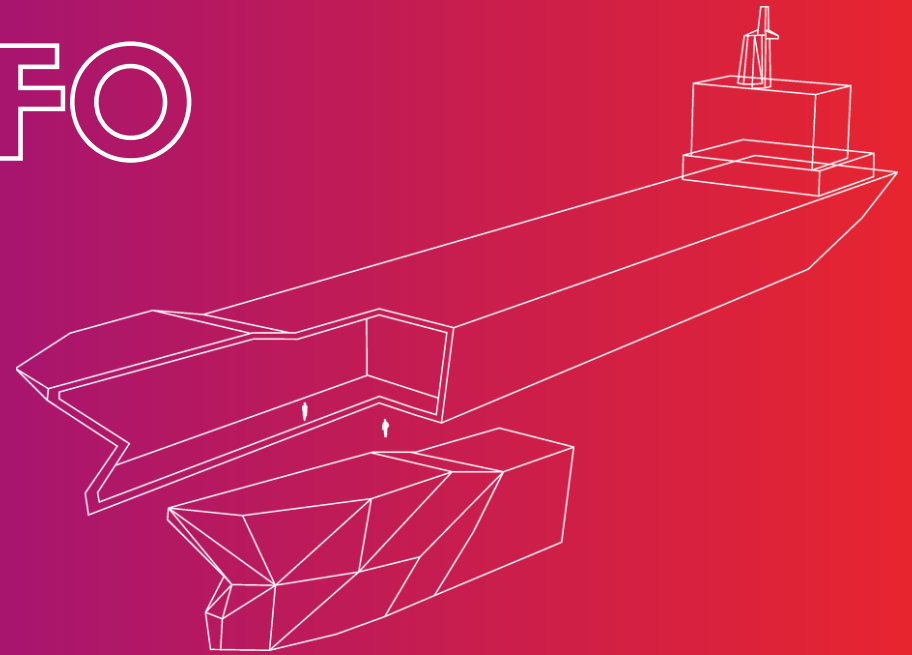
Metro Lines M1 & M2 to Gare Saint-Charles (train station) or M1 to Cinq Avenues-Longchamp/ then a 15 minutes walk.

Tram Line T2 to Longchamp runs until midnight, then a 10 minute walk.

RIDE-HAILING SERVICE PROVIDERS AND TAXIS

CONTACT US FOR MORE INFO

NGO Shipbreaking Platform
Rue de la Liniere 11, 1060 Brussels (Belgium)
Tel: +32 (0) 260 94 418
events@shipbreakingplatform.org



SHIP RECYCLING LAB